

# Journal of Mechanics of Materials and Structures

**ON THE STRONG INFLUENCE OF IMPERFECTIONS UPON  
THE QUICK DEVIATION OF A MODE I+III CRACK FROM COPLANARITY**

Jean-Baptiste Leblond and Véronique Lazarus

Volume 10, No. 3

May 2015



## ON THE STRONG INFLUENCE OF IMPERFECTIONS UPON THE QUICK DEVIATION OF A MODE I+III CRACK FROM COPLANARITY

JEAN-BAPTISTE LEBLOND AND VÉRONIQUE LAZARUS

This work explores the possibility that quick deviations of cracks loaded in mode I+III from coplanarity may be greatly facilitated by inevitable fluctuations of the fracture toughness. The idea is that such fluctuations must induce in-plane undulations of the crack front resulting, because of the presence of the mode III load, in nonzero values of the local stress intensity factor of mode II, implying future local out-of-plane deviations of the crack which might be “unstable” in Cotterell and Rice’s sense if the local nonsingular stress parallel to the direction of propagation is positive.

Exploration of this idea implies evaluation of the variations of the local stress intensity factors and nonsingular stresses arising from a slight but otherwise arbitrary in-plane perturbation of a semi-infinite crack. These quantities were calculated in works of Gao and Rice, but the evaluation of the nonsingular stresses was incomplete, and is supplemented here by using the theory of 3D weight functions due to Rice and Bueckner.

Inspection of the results shows that for in-plane sinusoidal undulations of the crack front of sufficient (though still small) amplitude, the conditions of nonzero local stress intensity factor of mode II and positive local nonsingular stress parallel to the direction of propagation are simultaneously met on some parts of the front, implying the possibility of future local deviations of the crack from coplanarity that are “unstable” in Cotterell and Rice’s sense, and thus confirming the idea investigated.

### 1. Introduction

The propagation of cracks loaded in mixed-mode I+III has been investigated in various materials: inorganic glass [Sommer 1969], polymeric glass [Knauss 1970], epoxy resin [Hull 1995], PMMA [Lazarus et al. 2008], Homalite [Lin et al. 2010], alumina [Suresh and Tschegg 1987], steels [Hourlier and Pineau 1979; Yates and Miller 1989; Lazarus 1997; Lazarus et al. 2001b], rocks [Pollard et al. 1982; Pollard and Aydin 1988; Cooke and Pollard 1996], gypsum and cheese [Goldstein and Osipenko 2012], to name just a few experimental papers on the subject. In all cases, it was observed that the crack propagates through formation of small fracture facets which may either abruptly “tilt” or gradually “twist” about the direction of propagation.

It has been remarked by Hourlier and Pineau [1979] that two types of facets are in fact formed: “type A” ones, rotating in such a way that the local stress intensity factor (SIF) of mode I increases with the distance of propagation while that of mode III decreases, and “type B” ones rotating oppositely so that the behavior of the local SIF is the reverse. Hourlier and Pineau also noted that the crack propagates preferentially along type A facets. A rationale for this observation was provided by Lazarus et al. [2001a;

---

*Keywords:* imperfections, deviation from coplanarity, mode I+III crack, nonsingular stresses, Cotterell and Rice’s directional stability criterion.

2001b], who showed, using theoretical estimates of the SIF after some short continuous twisting, that for a given facet length, the energy release rate is larger at the center of type A facets than at that of type B facets, implying that propagation of the former facets is more “energetically favored” than that of the latter ones.

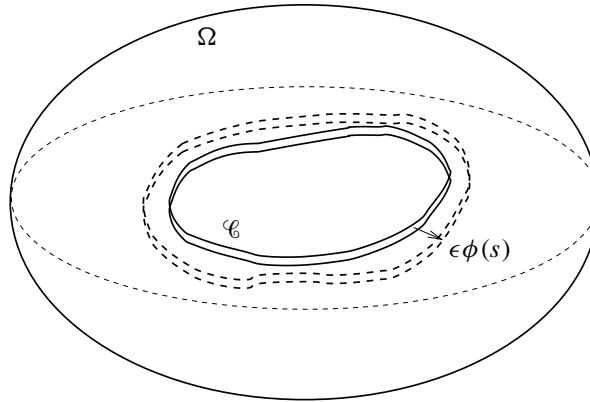
Pons and Karma [2010] performed numerical simulations of crack propagation in mode I+III based on a “phase field” model developed by Karma et al. [2001], which included a phenomenological description of failure mechanisms in the process zone around the crack front. These simulations reproduced both the gradual deviation of the crack from its original plane through formation of an array of inclined facets, and the quicker propagation of type A facets as compared to type B ones, in a remarkable way.

Although the theoretical framework employed in [Pons and Karma 2010] differed from standard linear elastic fracture mechanics (LEFM), it has been shown by Hakim and Karma [2009] that in the limit where the system size becomes much larger than the process zone size, Karma et al.’s phase field model [2001] in fact predicts that quasistatic crack propagation in isotropic media is governed by a combination of two classical LEFM criteria: a condition of uniform energy release rate along the front (Griffith’s criterion [1921]), and a condition of zero SIF of mode II (Goldstein and Salganik’s *principle of local symmetry* [1974]). This was the motivation for Leblond et al.’s theoretical analysis [2011], within the framework of LEFM, of the possible bifurcation from coplanar to noncoplanar propagation of cracks loaded in mode I+III. This analysis combined assumptions of constant value of the local energy release rate and zero value of the local mode II SIF all along the crack front, in line with the findings of Hakim and Karma [2009] and Pons and Karma [2010], with technical results of Gao and Rice [1986] and Movchan et al. [1998] on in-plane and out-of-plane perturbations of a plane crack. A bifurcation from coplanar to noncoplanar propagation was concluded to exist for values of the ratio of the mode III to mode I SIF larger than some threshold depending on Poisson’s ratio.

However, the threshold was found to be of the order of 0.5 for standard values of Poisson’s ratio. The bifurcation analysis could therefore *not* explain the fact that deviations of the crack from its original plane are currently observed for much smaller values of the ratio of the mode III to mode I SIF — a threshold of the order of 0.05 was mentioned in [Sommer 1969], and Pham and Ravi-Chandar [2014] have even claimed that there is no threshold at all.

The aim of this paper is to propose a possible explanation for this observation. The idea is that even for low values of the ratio of the mode III to mode I SIF, for which no bifurcation is predicted, deviations from coplanarity might occur because of a strong influence of imperfections upon the propagation path — quite in the same way as the influence of imperfections explains, for thin shells, the quick deviations from the fundamental deformed state currently observed for loads much lower than the theoretical buckling load. A typical example of inevitable imperfections consists of random fluctuations of the fracture toughness within the crack plane. Such fluctuations are bound to generate in-plane undulations of the crack front. It is intuitively obvious, and has been proved rigorously by Gao and Rice [1986], that the mode III load must generate nonzero and opposite local mode II SIF on the two sides of a local coplanar protrusion of the front; this implies that the crack will tend to extend out of its original plane in opposite directions on these two sides, thus giving birth to an incipient noncoplanar facet. If, in addition, Cotterell and Rice’s well-known “directional stability criterion” [1980] happens to be violated because of a locally positive nonsingular stress in the direction of crack propagation, the deviation of this facet from the original crack plane may quickly increase as the crack propagates, even in the absence of a true bifurcation.





**Figure 1.** Slight in-plane perturbation of a plane crack in an arbitrary body.

Investigation of this idea, in the typical case of a semi-infinite crack in some infinite body, requires that the local SIF and nonsingular stresses be known for such a crack, endowed with a slightly, coplanarly perturbed front. The calculation of the SIF was carried out in [Rice 1985] and [Gao and Rice 1986], with definitive results. That of the nonsingular stresses was carried out in [Gao 1992], but with restrictive hypotheses and incomplete results, making the completion of the task an indispensable prerequisite.

The paper is organized as follows:

- **Section 2** briefly recalls some elements of the theory of 3D weight functions [Rice 1985; Bueckner 1987], which serve as a basis in the analysis to follow.
- From there, **Section 3** presents the calculation of the first-order variation of the stresses on the crack plane resulting from some small but otherwise arbitrary in-plane perturbation of the crack front.
- We then derive from there, in **Section 4**, the first-order variations of the nonsingular stresses under similar conditions.
- **Section 5** briefly recalls Leblond's 3D extension [1999] of Cotterell and Rice's original 2D directional stability analysis of a propagating crack [1980], indispensable for the application of the preceding results to crack propagation in mode I+III.
- Finally, **Section 6** considers the case of a sinusoidal in-plane perturbation of the crack front, and examines whether Cotterell and Rice's directional stability criterion [1980] (as extended to the 3D case) is met or not, distinguishing between those parts of the undulated front about to give birth to type A and type B facets.

## 2. Elements of Rice and Bueckner's 3D weight function theory

Consider an arbitrary body  $\Omega$  made of some linear elastic isotropic material, and containing an arbitrary planar crack (Figure 1). Assume that prescribed displacements are imposed on the portion  $\partial\Omega_u$  of the boundary of this body, while prescribed tractions are imposed on the complementary portion  $\partial\Omega_T$ . This loading generates a distribution of SIF  $K_I^0(s)$ ,  $K_{II}^0(s)$ ,  $K_{III}^0(s)$ , where  $s$  denotes a curvilinear abscissa along the crack front  $\mathcal{C}$ , on this front.

Now slightly perturb  $\mathcal{C}$  within the crack plane, while keeping the loading applied on  $\partial\Omega_u$  and  $\partial\Omega_T$  unchanged. Let  $\epsilon\phi(s)$ , where  $\epsilon$  is a small parameter and  $\phi(s)$  a given, fixed function, denote the distance from the original front to the perturbed one, as measured perpendicularly to the former front. The components  $\delta u_i(\mathbf{r})$ , in an arbitrary orthonormal basis  $(\mathbf{e}_1, \mathbf{e}_2, \mathbf{e}_3)$ , of the resulting variation of displacement  $\delta\mathbf{u}$  at the point  $\mathbf{r}$  of the body, are given to first order by Rice's formula [1985]:

$$\delta u_i(\mathbf{r}) = \int_{\mathcal{C}} 2\Lambda_{\alpha\beta} h_{i\alpha}(\mathbf{r}, s) K_{\beta}^0(s) \epsilon\phi(s) ds. \quad (1)$$

In this expression:

- the indices  $\alpha$  and  $\beta$  take the values I, II and III, and Einstein's implicit summation convention is used for them;
- the coefficients  $\Lambda_{\alpha\beta}$  are those appearing in the quadratic form of the SIF defining the energy release rate, given by<sup>1</sup>

$$\Lambda_{\text{I,I}} = \Lambda_{\text{II,II}} = \frac{1-\nu^2}{E}, \quad \Lambda_{\text{III,III}} = \frac{1+\nu}{E}, \quad \text{other } \Lambda_{\alpha\beta} = 0, \quad (2)$$

where  $E$  and  $\nu$  denote Young's modulus and Poisson's ratio;

- finally, the  $h_{i\alpha}(\mathbf{r}, s)$  are the *3D weight functions* of the cracked geometry considered [Rice 1985; Bueckner 1987];  $h_{i\alpha}(\mathbf{r}, s)$  represents the  $\alpha$ -th SIF generated at the point  $s$  of the crack front by a unit point force applied in the direction  $\mathbf{e}_i$  at the point  $\mathbf{r}$  of the body, zero displacements being simultaneously prescribed on  $\partial\Omega_u$  and zero tractions on  $\partial\Omega_T$ .

Now,  $f$  being an arbitrary function of position and  $\mathbf{r}$  an arbitrary point on the crack plane lying inside the crack contour, let

$$\langle f \rangle(\mathbf{r}) \equiv \frac{1}{2}[f(\mathbf{r}^+) + f(\mathbf{r}^-)] \quad (3)$$

denote the average of the values of this function at the points  $\mathbf{r}^+$ ,  $\mathbf{r}^-$  of the upper (+) and lower (−) faces of the crack. With this notation, application of (1) on the crack faces yields

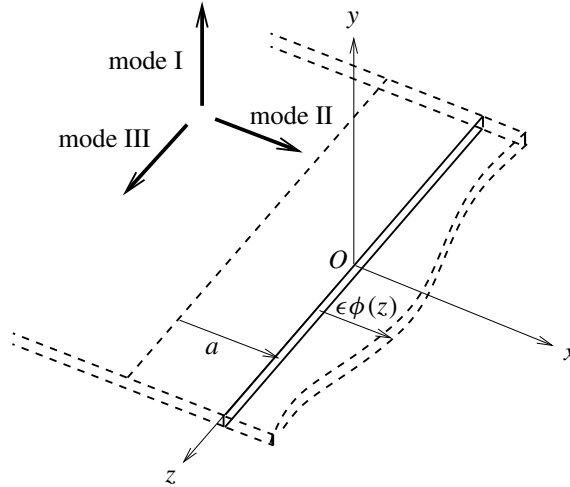
$$\langle \delta u_i \rangle(\mathbf{r}) = \int_{\mathcal{C}} 2\Lambda_{\alpha\beta} \langle h_{i\alpha} \rangle(\mathbf{r}, s) K_{\beta}^0(s) \epsilon\phi(s) ds, \quad (4)$$

where  $\langle h_{i\alpha} \rangle(\mathbf{r}, s)$ , a *crack-face weight function* (CFWF), now represents the  $\alpha$ -th SIF generated at the point  $s$  of the crack front by two half-unit point forces applied in the direction  $\mathbf{e}_i$  at the points  $\mathbf{r}^+$ ,  $\mathbf{r}^-$  of the crack faces, zero displacements being simultaneously prescribed on  $\partial\Omega_u$  and zero tractions on  $\partial\Omega_T$ .

### 3. First-order variation of the stresses on the crack faces

**3.1. Generalities.** Consider now, more specifically, a semi-infinite crack located in some infinite body subjected to prescribed forces only (Figure 2). Following the usual convention, define a Cartesian frame  $(O, x, y, z)$  with  $O$  on the unperturbed crack front,  $x$  in the direction of propagation,  $y$  in the direction of the normal to the crack plane, and  $z$  in the direction of the crack front. Also, characterize the position of the unperturbed front  $Oz$  through its distance  $a$  to some fixed “reference line” parallel to it in the crack plane.

<sup>1</sup>For the sake of clarity, commas separating the indices are exceptionally introduced into this equation.



**Figure 2.** Slight in-plane perturbation of a semi-infinite crack loaded arbitrarily.

Equation (4) then takes the special form, with obvious notations,

$$\langle \delta u_i \rangle(x, z) = \int_{-\infty}^{+\infty} 2\Lambda_{\alpha\beta} \langle h_{i\alpha} \rangle(x, z; z') K_{\beta}^0(z') \epsilon\phi(z') dz'. \tag{5}$$

The aim of this section is to derive from there the expressions of the average variations  $\langle \delta\sigma_{xx} \rangle$ ,  $\langle \delta\sigma_{zz} \rangle$  and  $\langle \delta\sigma_{xz} \rangle$  of the in-plane stresses on the crack faces. When (5) is used for this sole purpose, some simplifications arise:

- It is enough to know the in-plane components  $\langle \delta u_x \rangle$ ,  $\langle \delta u_z \rangle$  of the average variation of displacement  $\langle \delta \mathbf{u} \rangle$ ; the out-of-plane component  $\langle \delta u_y \rangle$  is not needed.
- The expressions of these in-plane components involve the CFWFs  $\langle h_{x\alpha} \rangle$  and  $\langle h_{z\alpha} \rangle$ , which are nonzero only for  $\alpha = I$ , since the loadings implied, consisting of half-unit point forces applied on the crack faces in the directions  $x$  and  $z$ , are symmetric with respect to the crack plane and therefore do not generate any mode II or III.

The formulae required therefore simply read, by (2),

$$\begin{cases} \langle \delta u_x \rangle(x, z) = 2 \frac{1-\nu^2}{E} \int_{-\infty}^{+\infty} \langle h_{xI} \rangle(x, z; z') K_I^0(z') \epsilon\phi(z') dz', \\ \langle \delta u_z \rangle(x, z) = 2 \frac{1-\nu^2}{E} \int_{-\infty}^{+\infty} \langle h_{zI} \rangle(x, z; z') K_I^0(z') \epsilon\phi(z') dz'. \end{cases} \tag{6}$$

**3.2. Variations of the displacement components and their spatial derivatives.** The CFWFs  $\langle h_{xI} \rangle$ ,  $\langle h_{zI} \rangle$  for a semi-infinite crack have been calculated in [Bueckner 1987; Kuo 1993; Movchan et al. 1998]. The simplest way of expressing the results is as follows [Kuo 1993]: assume that point forces of intensities  $F_x$  and  $F_z$  are simultaneously applied in the directions  $x$  and  $z$  on the points  $(x, y = 0^+, z)$  and  $(x, y = 0^-, z)$  of the upper and lower crack faces; these forces together generate a mode I SIF  $k_I$  at the point  $z'$  of the crack front given by

$$k_I(z') \equiv 2F_x \langle h_{xI} \rangle(x, z; z') + 2F_z \langle h_{zI} \rangle(x, z; z') = \frac{1}{4\sqrt{\pi}} \frac{1-2\nu}{1-\nu} \operatorname{Re} \left\{ \frac{F_x + iF_z}{[-x + i(z' - z)]^{3/2}} \right\}, \quad (7)$$

where the cut of the complex power function is along the half-line of nonpositive reals. Since this compact formula “couples” the CFWFs  $\langle h_{xI} \rangle$  and  $\langle h_{zI} \rangle$ , it seems appropriate, when inserting it into the expressions (6) of  $\langle \delta u_x \rangle$  and  $\langle \delta u_z \rangle$ , to introduce arbitrary real parameters  $\alpha$ ,  $\beta$  and consider the single quantity  $\langle \alpha \delta u_x + \beta \delta u_z \rangle$  rather than  $\langle \delta u_x \rangle$  and  $\langle \delta u_z \rangle$  individually. One thus gets

$$\begin{aligned} \langle \alpha \delta u_x + \beta \delta u_z \rangle(x, z) &= 2 \frac{1-\nu^2}{E} \int_{-\infty}^{+\infty} \langle \alpha h_{xI} + \beta h_{zI} \rangle(x, z; z') K_I^0(z') \epsilon \phi(z') dz' \\ &= \frac{(1+\nu)(1-2\nu)}{4\sqrt{\pi} E} \operatorname{Re} \left\{ \int_{-\infty}^{+\infty} \frac{\alpha + i\beta}{[-x + i(z' - z)]^{3/2}} K_I^0(z') \epsilon \phi(z') dz' \right\}, \end{aligned}$$

or, equivalently, after integration by parts,

$$\langle \alpha \delta u_x + \beta \delta u_z \rangle(x, z) = \frac{(1+\nu)(1-2\nu)}{2\sqrt{\pi} E} \operatorname{Re} \left\{ \int_{-\infty}^{+\infty} \frac{\beta - i\alpha}{[-x + i(z' - z)]^{1/2}} (K_I^0 \epsilon \phi)'(z') dz' \right\}. \quad (8)$$

Differentiating this equation with respect to  $x$  and  $z$ , and then ascribing the values (1, 0) and (0, 1) to the pair  $(\alpha, \beta)$ , one gets the average spatial derivatives of the components of the variation of displacement:

$$\begin{cases} \left\langle \frac{\partial \delta u_x}{\partial x} \right\rangle(x, z) = - \left\langle \frac{\partial \delta u_z}{\partial z} \right\rangle(x, z) = \frac{(1+\nu)(1-2\nu)}{4\sqrt{\pi} E} \operatorname{Im} \left\{ \int_{-\infty}^{+\infty} \frac{(K_I^0 \epsilon \phi)'(z')}{[-x + i(z' - z)]^{3/2}} dz' \right\}, \\ \left\langle \frac{\partial \delta u_x}{\partial z} \right\rangle(x, z) = \left\langle \frac{\partial \delta u_z}{\partial x} \right\rangle(x, z) = \frac{(1+\nu)(1-2\nu)}{4\sqrt{\pi} E} \operatorname{Re} \left\{ \int_{-\infty}^{+\infty} \frac{(K_I^0 \epsilon \phi)'(z')}{[-x + i(z' - z)]^{3/2}} dz' \right\}. \end{cases} \quad (9)$$

**3.3. Variations of the stress components.** The stress components  $\sigma_{yx}$ ,  $\sigma_{yy}$  and  $\sigma_{yz}$  being zero on the crack faces, the average variations  $\langle \delta \sigma_{xx} \rangle$ ,  $\langle \delta \sigma_{zz} \rangle$ ,  $\langle \delta \sigma_{xz} \rangle$  of the in-plane stresses on these faces may be obtained from the expressions (9) through application of the plane stress elastic stiffness tensor:

$$\begin{cases} \langle \delta \sigma_{xx} \rangle(x, z) = - \langle \delta \sigma_{zz} \rangle(x, z) = \frac{1-2\nu}{4\sqrt{\pi}} \operatorname{Im} \left\{ \int_{-\infty}^{+\infty} \frac{(K_I^0 \epsilon \phi)'(z')}{[-x + i(z' - z)]^{3/2}} dz' \right\}, \\ \langle \delta \sigma_{xz} \rangle(x, z) = \frac{1-2\nu}{4\sqrt{\pi}} \operatorname{Re} \left\{ \int_{-\infty}^{+\infty} \frac{(K_I^0 \epsilon \phi)'(z')}{[-x + i(z' - z)]^{3/2}} dz' \right\}. \end{cases} \quad (10)$$

Equation (10)<sub>1</sub> implies in particular that the average variation  $\langle \delta \sigma_{xx} + \delta \sigma_{zz} \rangle$  is zero whatever the perturbation of the crack front; this means that *at a given point of the broken region of the crack plane, the average 2D trace of the stress tensor,  $\langle \sigma_{xx} + \sigma_{zz} \rangle$ , is independent of the position and shape of the crack front.* This remarkable property is noted here in the special case of a semi-infinite crack, but was shown by Gao [1992] to in fact hold for *any* planar crack of arbitrary contour in some infinite body.

The variations of the nonsingular stresses will be deduced from the asymptotic behavior of  $\langle \delta \sigma_{xx} \rangle$ ,  $\langle \delta \sigma_{zz} \rangle$ ,  $\langle \delta \sigma_{xz} \rangle$  near the crack front, that is in the limit  $x \rightarrow 0^-$ . This makes it necessary to evaluate the limit

$$\lim_{x \rightarrow 0^-} \int_{-\infty}^{+\infty} \frac{(K_I^0 \epsilon \phi)'(z')}{[-x + i(z' - z)]^{3/2}} dz'.$$

In order to do so, rewrite the integral as

$$\int_{-\infty}^{+\infty} \frac{(K_I^0 \epsilon \phi)'(z')}{[-x + i(z' - z)]^{3/2}} dz' = \int_{-\infty}^{+\infty} \frac{(K_I^0 \epsilon \phi)'(z') - (K_I^0 \epsilon \phi)'(z)}{[-x + i(z' - z)]^{3/2}} dz' + (K_I^0 \epsilon \phi)'(z) \int_{-\infty}^{+\infty} \frac{dz'}{[-x + i(z' - z)]^{3/2}}.$$

The second integral in the right-hand side is obviously zero, and the first one goes to the limit

$$\int_{-\infty}^{+\infty} \frac{(K_I^0 \epsilon \phi)'(z') - (K_I^0 \epsilon \phi)'(z)}{[i(z' - z)]^{3/2}} dz'$$

as  $x \rightarrow 0^-$ . (Note that this integral is convergent at the point  $z' = z$  since the integrand behaves like  $|z' - z|^{-1/2}$  near it.) Evaluating  $[i(z' - z)]^{3/2}$  using the definition of the complex power function and distinguishing between the cases  $z' < z$  and  $z' > z$ , one concludes that

$$\lim_{x \rightarrow 0^-} \int_{-\infty}^{+\infty} \frac{(K_I^0 \epsilon \phi)'(z')}{[-x + i(z' - z)]^{3/2}} dz' = -\frac{1}{\sqrt{2}} \int_{-\infty}^{+\infty} \frac{(K_I^0 \epsilon \phi)'(z') - (K_I^0 \epsilon \phi)'(z)}{|z' - z|^{3/2}} dz' - \frac{i}{\sqrt{2}} \int_{-\infty}^{+\infty} \text{sgn}(z' - z) \frac{(K_I^0 \epsilon \phi)'(z') - (K_I^0 \epsilon \phi)'(z)}{|z' - z|^{3/2}} dz', \quad (11)$$

where  $\text{sgn}(x)$  denotes the sign of  $x$ .

Inserting (11) into the expressions (10) of  $\langle \delta \sigma_{xx} \rangle$ ,  $\langle \delta \sigma_{zz} \rangle$ ,  $\langle \delta \sigma_{xz} \rangle$ , one finally gets the desired limits:

$$\left\{ \begin{aligned} \langle \delta \sigma_{xx} \rangle(0^-, z) &= -\langle \delta \sigma_{zz} \rangle(0^-, z) \\ &= -\frac{1-2\nu}{4\sqrt{2\pi}} \int_{-\infty}^{+\infty} \text{sgn}(z' - z) \frac{(K_I^0 \epsilon \phi)'(z') - (K_I^0 \epsilon \phi)'(z)}{|z' - z|^{3/2}} dz', \\ \langle \delta \sigma_{xz} \rangle(0^-, z) &= -\frac{1-2\nu}{4\sqrt{2\pi}} \int_{-\infty}^{+\infty} \frac{(K_I^0 \epsilon \phi)'(z') - (K_I^0 \epsilon \phi)'(z)}{|z' - z|^{3/2}} dz'. \end{aligned} \right. \quad (12)$$

#### 4. First-order variations of the nonsingular stresses

**4.1. Special case of an immobile point of the crack front.** In a first step, we wish to derive the variations of the nonsingular stresses for an *immobile* point of the crack front, having  $\phi(z) = 0$ . In such a case the point of observation of the in-plane stresses to be used to define the nonsingular stresses, located just behind the crack front, does not move when this front is perturbed; hence the local variations of the nonsingular stresses are simply related to the local average variations of the in-plane stresses.

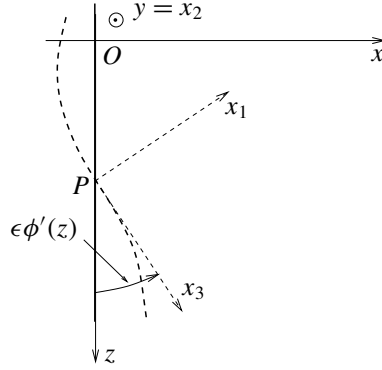
More specifically, define a Cartesian frame  $(P, x_1, x_2 \equiv y, x_3)$  “adapted” to the perturbed crack front at the immobile point  $P$  considered (Figure 3). To first order in the perturbation, the unit vectors  $e_1, e_2, e_3$  corresponding to the coordinates  $x_1, x_2, x_3$  are related to the vectors  $e_x, e_y, e_z$  corresponding to the coordinates  $x, y, z$  adapted to the unperturbed front through the relations

$$e_1 = e_x - \epsilon \phi'(z) e_z, \quad e_2 = e_y, \quad e_3 = e_z + \epsilon \phi'(z) e_x. \quad (13)$$

In the local frame, the average in-plane stress components  $\langle \sigma_{11} \rangle, \langle \sigma_{33} \rangle, \langle \sigma_{13} \rangle$

- are zero for the first, singular term of the Williams expansion of the stresses;





**Figure 3.** Definition of local axes for the perturbed front.

- are equal to the nonsingular stresses  $T_{11}, T_{33}, T_{13}$  for the second term;
- vanish close to the crack front for the next terms.

Hence  $T_{11}, T_{33}, T_{13}$  may be identified to the limits of  $\langle \sigma_{11} \rangle, \langle \sigma_{33} \rangle, \langle \sigma_{13} \rangle$  when the point of observation of these quantities gets infinitely close to the crack front. Therefore, unperturbed values and variations of quantities being denoted with symbols  $^0$  and  $\delta$  respectively, the average perturbed stress tensor  $\langle \sigma^0 + \delta \sigma \rangle$  on the crack faces close to the front may be expressed as

$$\begin{aligned} \langle \sigma^0 + \delta \sigma \rangle(0^-, z) &= [T_{11}^0(z) + \delta T_{11}(z)] \mathbf{e}_1 \otimes \mathbf{e}_1 + [T_{33}^0(z) + \delta T_{33}(z)] \mathbf{e}_3 \otimes \mathbf{e}_3 \\ &\quad + [T_{13}^0(z) + \delta T_{13}(z)] (\mathbf{e}_1 \otimes \mathbf{e}_3 + \mathbf{e}_3 \otimes \mathbf{e}_1) \\ &= [T_{11}^0(z) + \delta T_{11}(z)] \mathbf{e}_x \otimes \mathbf{e}_x + [T_{33}^0(z) + \delta T_{33}(z)] \mathbf{e}_z \otimes \mathbf{e}_z \\ &\quad + [T_{13}^0(z) + \delta T_{13}(z)] (\mathbf{e}_x \otimes \mathbf{e}_z + \mathbf{e}_z \otimes \mathbf{e}_x) \\ &\quad + 2T_{13}^0(z) \epsilon \phi'(z) \mathbf{e}_x \otimes \mathbf{e}_x - 2T_{13}^0(z) \epsilon \phi'(z) \mathbf{e}_z \otimes \mathbf{e}_z \\ &\quad + [T_{33}^0(z) - T_{11}^0(z)] \epsilon \phi'(z) (\mathbf{e}_x \otimes \mathbf{e}_z + \mathbf{e}_z \otimes \mathbf{e}_x), \end{aligned}$$

where (13) has been used.

But, on the other hand, this average perturbed stress tensor may also be expressed as

$$\begin{aligned} \langle \sigma^0 + \delta \sigma \rangle(0^-, z) &= \\ &\langle \sigma_{xx}^0 + \delta \sigma_{xx} \rangle(0^-, z) \mathbf{e}_x \otimes \mathbf{e}_x + \langle \sigma_{zz}^0 + \delta \sigma_{zz} \rangle(0^-, z) \mathbf{e}_z \otimes \mathbf{e}_z + \langle \sigma_{xz}^0 + \delta \sigma_{xz} \rangle(0^-, z) (\mathbf{e}_x \otimes \mathbf{e}_z + \mathbf{e}_z \otimes \mathbf{e}_x). \end{aligned}$$

Comparison of these two formulae and identification of the first-order terms yields the following expressions for the variations of the nonsingular stresses:

$$\begin{cases} \delta T_{11}(z) = -2T_{13}^0(z) \epsilon \phi'(z) + \langle \delta \sigma_{xx} \rangle(0^-, z), \\ \delta T_{33}(z) = 2T_{13}^0(z) \epsilon \phi'(z) + \langle \delta \sigma_{zz} \rangle(0^-, z), \\ \delta T_{13}(z) = [T_{11}^0(z) - T_{33}^0(z)] \epsilon \phi'(z) + \langle \delta \sigma_{xz} \rangle(0^-, z), \end{cases} \quad (14)$$

where the average variations of the stresses are given by the equations (12).

**4.2. General case.** In order to now evaluate the variations of the nonsingular stresses in the general case where  $\phi(z) \neq 0$ , we use the same trick as in [Rice 1985; Gao and Rice 1986] on the variations of the SIF: we decompose the perturbation  $\epsilon\phi$  in the form

$$\epsilon\phi(z') = \epsilon\phi(z) + \epsilon\bar{\phi}(z'), \quad \text{where } \bar{\phi}(z') \equiv \phi(z') - \phi(z). \quad (15)$$

- The first term of the decomposition represents a translation of the unperturbed crack front by the distance  $\epsilon\phi(z)$ , which generates a variation of the nonsingular stress  $T_{ij}$  equal to  $(\partial T_{ij}^0/\partial a)(z)\epsilon\phi(z)$ , where  $(\partial T_{ij}^0/\partial a)(z)$  is the derivative of the unperturbed nonsingular stress  $T_{ij}^0$  with respect to the position  $a$  of the straight crack front; see Figure 2.<sup>2</sup>
- The second term represents a motion in which the point  $z$  remains immobile. Therefore, the equations (14) may be used, with  $\bar{\phi}(z')$  instead of  $\phi(z')$ , to evaluate the resulting variations of the nonsingular stresses.

Adding the contributions of the two terms, and using the equations (12) for the average variations of the stresses and the definition (15)<sub>2</sub> of the function  $\bar{\phi}$ , one finally gets the following formulae for the variations of the nonsingular stresses in the general case:

$$\begin{aligned} \delta T_{11}(z) = & \frac{\partial T_{11}^0}{\partial a}(z)\epsilon\phi(z) - 2T_{13}^0(z)\epsilon\phi'(z) - \frac{1-2\nu}{4\sqrt{2\pi}} \int_{-\infty}^{+\infty} \{ (K_I^0\epsilon\phi')(z') - (K_I^0\epsilon\phi')(z) \\ & + (K_I^0)'(z')[\epsilon\phi(z') - \epsilon\phi(z)] \} \frac{\text{sgn}(z'-z)}{|z'-z|^{3/2}} dz'; \end{aligned} \quad (16)$$

$$\begin{aligned} \delta T_{33}(z) = & \frac{\partial T_{33}^0}{\partial a}(z)\epsilon\phi(z) + 2T_{13}^0(z)\epsilon\phi'(z) + \frac{1-2\nu}{4\sqrt{2\pi}} \int_{-\infty}^{+\infty} \{ (K_I^0\epsilon\phi')(z') - (K_I^0\epsilon\phi')(z) \\ & + (K_I^0)'(z')[\epsilon\phi(z') - \epsilon\phi(z)] \} \frac{\text{sgn}(z'-z)}{|z'-z|^{3/2}} dz'; \end{aligned} \quad (17)$$

$$\begin{aligned} \delta T_{13}(z) = & \frac{\partial T_{13}^0}{\partial a}(z)\epsilon\phi(z) + [T_{11}^0(z) - T_{33}^0(z)]\epsilon\phi'(z) - \frac{1-2\nu}{4\sqrt{2\pi}} \int_{-\infty}^{+\infty} \{ (K_I^0\epsilon\phi')(z') - (K_I^0\epsilon\phi')(z) \\ & + (K_I^0)'(z')[\epsilon\phi(z') - \epsilon\phi(z)] \} \frac{dz'}{|z'-z|^{3/2}}. \end{aligned} \quad (18)$$

It is worth noting that, *unlike the average variation*  $\langle \delta\sigma_{xx} + \delta\sigma_{zz} \rangle$ , *the variation*  $\delta T_{11} + \delta T_{33}$  *is nonzero in general.* The effect arises solely from the terms  $(\partial T_{11}^0/\partial a)(z)\epsilon\phi(z)$  and  $(\partial T_{33}^0/\partial a)(z)\epsilon\phi(z)$  in the right-hand sides of (16) and (17), the sum of which has no reason to be zero. In physical terms, even though  $\langle \sigma_{xx} + \sigma_{zz} \rangle$ , *at a given, fixed point* of the broken region of the crack plane, is independent of the position and shape of the crack front, evaluating the variation of  $T_{11} + T_{33}$  implies *following the point of observation* of  $\langle \sigma_{xx} + \sigma_{zz} \rangle$  as the front moves, which inevitably entails a variation of this quantity.

**4.3. Comparison with the work of Gao.** Gao [1992] did not consider only the case of an initially straight crack front as in the present work, but also that of a circular one. However, he introduced a number of restrictive hypotheses not made here:

<sup>2</sup>The additional dependence of this quantity and other ones upon the argument  $a$  is omitted to alleviate the notation.

- A pure mode I loading was assumed. However, our general expressions (16), (17) and (18) for  $\delta T_{11}$ ,  $\delta T_{33}$  and  $\delta T_{13}$ , respectively, show that considering more general mixed-mode loadings would not in fact have changed anything, since the unperturbed SIFs  $K_{\text{II}}^0$ ,  $K_{\text{III}}^0$  of modes II and III do not appear in them.
- The unperturbed SIF  $K_{\text{I}}^0$  of mode I was assumed to be independent of the position  $z$  along the crack front. The possible variation of  $K_{\text{I}}^0$  along this front does modify the expressions (16)–(18) through the term  $(K_{\text{I}}^0)'(z')[\epsilon\phi(z') - \epsilon\phi(z)]$  appearing in the integrand in each of them.
- The perturbation of the crack front was assumed to be sinusoidal. This was in fact equivalent to providing the expressions for  $\delta T_{11}$ ,  $\delta T_{33}$ ,  $\delta T_{13}$  in Fourier space. However, our expressions (16), (17), (18) in the physical space are interesting in themselves, and getting them from those of [Gao 1992] through inverse Fourier transform is not a completely straightforward operation.

With these hypotheses, Gao obtained expressions for  $\delta T_{11}$ ,  $\delta T_{33}$ ,  $\delta T_{13}$  coinciding exactly with the integral terms in the right-hand sides of our equations (16), (17), (18), as evaluated for a sinusoidal perturbation. However all additional terms proportional to the  $\partial T_{ij}^0/\partial a$  and  $T_{ij}^0$  were absent. These terms were apparently really missing in the sense that the hypotheses made did not seem to permit discarding them.

## 5. Cotterell and Rice’s directional stability criterion for 3D cracks

In this section, we briefly recall, as a prerequisite for Section 6, Leblond’s 3D extension [1999] of Cotterell and Rice’s classical 2D analysis of directional stability of a propagating crack [1980].

We therefore consider, within an arbitrary 3D body, an initially planar crack of arbitrary contour, and denote by  $s$  some curvilinear abscissa along this contour. This crack is loaded through some system of prescribed forces and/or displacements generating distributions of SIF  $K_{\text{I}}(s)$ ,  $K_{\text{II}}(s)$ ,  $K_{\text{III}}(s)$  and non-singular stresses  $T_{11}(s)$ ,  $T_{33}(s)$ ,  $T_{13}(s)$  along its front. These distributions are arbitrary except that the mode II SIF  $K_{\text{II}}(s)$  is assumed to be everywhere small.

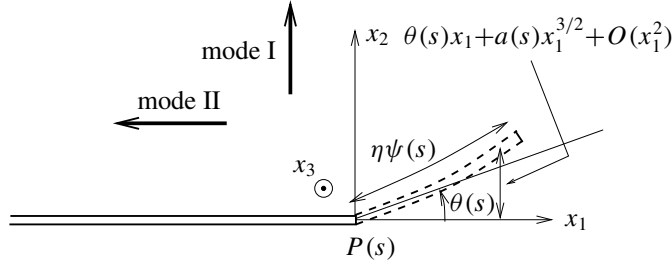
Because of the presence of mode II, the crack propagates in a slightly noncoplanar way. More specifically, at each point  $P(s)$  of the original crack front, propagation of the crack results in the creation of some small, slightly kinked and curved extension; the length of this extension is  $\eta\psi(s)$  where  $\eta$  is a small parameter and  $\psi$  a given function, and its equation reads, in the local “adapted” frame  $(P(s), x_1, x_2, x_3)$  defined as in Figure 3,

$$x_2 = \theta(s)x_1 + a(s)x_1^{3/2} + O(x_1^2), \quad (19)$$

where  $\theta(s)$  ( $\ll 1$ ) is the local “kink angle” and  $a(s)$  a local “curvature parameter” (Figure 4, where  $K_{\text{II}}(s)$  is assumed to be negative in order for  $\theta(s)$  to be positive; see (21) below). The peculiar shape of the curve defined by (19), resulting from the term proportional to  $x_1^{3/2}$  instead of simply  $x_1^2$ , will be seen to be necessary for the propagation criterion to be satisfied.

Leblond [1999] and Leblond et al. [1999] have derived, under such conditions, the expansions of the SIFs  $K_{\text{I}}(s; \eta)$ ,  $K_{\text{II}}(s; \eta)$ ,  $K_{\text{III}}(s; \eta)$  along the extended front in powers of  $\eta$ . At order  $\eta^{1/2}$ , these “extended SIFs” depend upon the geometrical and mechanical parameters only through their *local* values at that point where they are evaluated,<sup>3</sup> and are given by formulae very similar to those of [Cotterell

<sup>3</sup>This does not remain true at order  $\eta^1 = \eta$ : the expressions of the extended SIF at a given point depend at that order upon the whole distribution of geometrical and mechanical parameters on the crack front; see [Leblond et al. 1999].



**Figure 4.** Geometric hypotheses and notations for Cotterell and Rice’s directional stability analysis of a propagating crack.

and Rice 1980] for the 2D case, except for the extra dependence of all quantities on  $s$ . In particular, the expansion of  $K_{II}(s; \eta)$  reads

$$K_{II}(s; \eta) = K_{II}(s) + \frac{1}{2}\theta(s)K_I(s) + \left[-2\sqrt{2/\pi}\theta(s)T_{11}(s) + \frac{3}{4}a(s)K_I(s)\right]\sqrt{\eta\psi(s)} + O(\eta). \quad (20)$$

(Note that  $\lim_{\eta \rightarrow 0^+} K_{II}(s; \eta)$  differs from  $K_{II}(s)$  because of the kink.) This equation may be used to predict the values of the local kink angle  $\theta(s)$  and curvature parameter  $a(s)$ , assuming the shape of the propagating crack to be governed by Goldstein and Salganik’s principle of local symmetry [1974], which demands that  $K_{II}(s; \eta)$  be constantly zero after the initial kink. This condition yields:

- at order  $\eta^0 = 1$ ,

$$\theta(s) = -2\frac{K_{II}(s)}{K_I(s)}; \quad (21)$$

- at order  $\eta^{1/2}$ ,

$$a(s) = \frac{8}{3}\sqrt{2/\pi}\frac{T_{11}(s)}{K_I(s)}\theta(s). \quad (22)$$

Equation (22) permits us to discuss the local directional stability of crack propagation. Cotterell and Rice [1980] indeed consider that directional stability prevails if the effect of the curvature parameter  $a(s)$  tends to counterbalance that of the kink angle  $\theta(s)$  and bring the crack back to its original plane, that is, if these quantities are of opposite signs.<sup>4</sup> This leads to the following criterion (since necessarily  $K_I(s) > 0$ ):

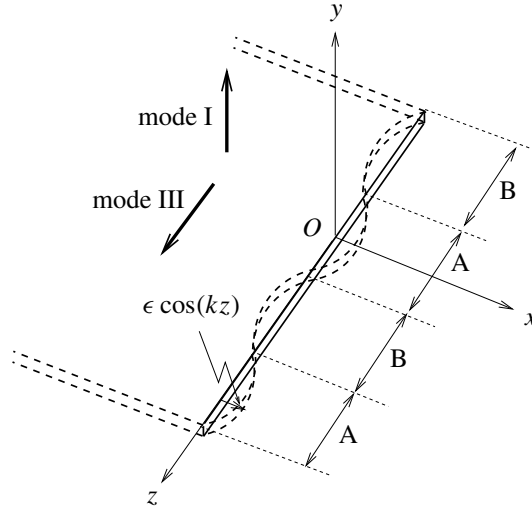
$$\text{directional stability} \iff T_{11}(s) < 0. \quad (23)$$

## 6. Application to deviation of a mode I+III crack from coplanarity

**6.1. Position of the problem.** We now consider a semi-infinite crack loaded in mode I+III in an infinite body (Figure 5). The unperturbed SIFs  $K_I^0, K_{III}^0$  on the straight configuration of the crack front are assumed to be uniform along this front. Inevitable fluctuations of the fracture toughness within the crack plane are assumed to generate small in-plane undulations of the front depicted by the typically sinusoidal perturbation

$$\epsilon\phi(z) \equiv \epsilon \cos(kz) \quad (k > 0). \quad (24)$$

<sup>4</sup>Though reasonable, this condition does not result from some fundamental stability theory, but simply from some *ad hoc* postulate; this is why such prudent expressions as “directional stability in the sense of Cotterell and Rice” and “Cotterell and Rice’s directional stability criterion” are used in this paper.



**Figure 5.** In-plane sinusoidal perturbation of a semi-infinite crack loaded in mode I+III.

In Figure 5, the zones of the perturbed crack front having  $\cos(kz) > 0$  and  $< 0$  are indicated with the symbols A and B, respectively, meaning that they are anticipated to generate future noncoplanar facets of these types. Indeed, the former, more advanced zones will generate facets lying ahead of the mean position of the front, which is a typical property of type A ones (see the introduction); conversely, the latter, less advanced zones will generate facets lying behind the same position, which is typical of type B ones.

Making use of the results of the preceding sections, we wish to study the deviation from coplanarity and directional stability of the incipient facets on the two types of zones. This first requires us to determine the distributions of the second SIF  $K_{II}$  and first nonsingular stress  $T_{11}$  along the coplanarly perturbed crack front.

**6.2. Expression of the perturbed mode II stress intensity factor.** Gao and Rice [1986] have calculated, for the semi-infinite crack considered, the variations of the SIF resulting from some arbitrary coplanar perturbation of the front; their result for the mode II SIF reads

$$\delta K_{II}(z) = \frac{\partial K_{II}^0}{\partial a}(z) \epsilon \phi(z) - \frac{2}{2-\nu} K_{III}^0(z) \epsilon \phi'(z) + \frac{1}{2\pi} \frac{2-3\nu}{2-\nu} \text{PV} \int_{-\infty}^{+\infty} K_{II}^0(z') \frac{\epsilon \phi(z') - \epsilon \phi(z)}{(z' - z)^2} dz', \quad (25)$$

where  $(\partial K_{II}^0 / \partial a)(z)$  is the derivative of the unperturbed mode II SIF  $K_{II}^0$  with respect to the position  $a$  of the straight crack front (see Figure 2) and the symbol PV  $\int$  denotes the Cauchy principal value of an integral. In the special case considered here, where  $K_{II}^0$  and  $K_{III}^0$  are, respectively, zero and uniform along the unperturbed front and the perturbation  $\epsilon \phi$  is of the form (24), this yields

$$K_{II}(z) = \delta K_{II}(z) = \frac{2}{2-\nu} K_{III}^0 k \epsilon \sin(kz) \quad (26)$$

for the mode II SIF  $K_{II}$  along the perturbed front.

**6.3. Expression of the perturbed first nonsingular stress.** In order to now evaluate the nonsingular stress  $T_{11}$  along the coplanarly perturbed crack front, we introduce the following hypotheses:



- The unperturbed SIFs  $K_I^0$  and  $K_{III}^0$  are comparable in magnitude. Also, the unperturbed nonsingular stresses  $T_{ij}^0$  and their derivatives  $\partial T_{ij}^0/\partial a$  with respect to the position of the straight crack front are of the order of  $K_I^0 L^{-1/2}$  and  $K_I^0 L^{-3/2}$ , respectively, where  $L$  is the characteristic length defined by the loading (in the absence of any characteristic length scale defined by the geometry itself).
- The characteristic length  $L$  is much larger than the typical distance of fluctuation of the fracture toughness, and therefore than the wavelength  $\lambda \equiv 2\pi/k$  of the perturbation resulting from the nonuniformity of this toughness.

The perturbation  $\epsilon\phi$  and its derivative  $\epsilon\phi'$  being of the order of  $\epsilon$  and  $k\epsilon$ , respectively, it follows from the first hypothesis that the first, second and third terms in the right-hand side of the expression (16) of  $\delta T_{11}$  are of the order of  $K_I^0 L^{-3/2}\epsilon$ ,  $K_I^0 L^{-1/2}k\epsilon$  and  $K_I^0 k^{3/2}\epsilon$ , respectively. Since the second hypothesis implies that  $kL \gg 1$ , the first and second terms are negligible compared to the third one. It follows that, for the sinusoidal perturbation considered,

$$\begin{aligned} \delta T_{11}(z) &\simeq -\frac{1-2\nu}{4\sqrt{2\pi}} \int_{-\infty}^{+\infty} K_I^0 [-k\epsilon \sin(kz') + k\epsilon \sin(kz)] \frac{\text{sgn}(z'-z)}{|z'-z|^{3/2}} dz' \\ &= \frac{1-2\nu}{4\sqrt{2\pi}} K_I^0 k\epsilon \text{Im} \left[ \int_{-\infty}^{+\infty} (e^{ikz'} - e^{ikz}) \frac{\text{sgn}(z'-z)}{|z'-z|^{3/2}} dz' \right] \\ &= \frac{1-2\nu}{4\sqrt{2\pi}} K_I^0 k\epsilon \text{Im} \left[ e^{ikz} \int_{-\infty}^{+\infty} (e^{ik\zeta} - 1) \frac{\text{sgn}(\zeta)}{|\zeta|^{3/2}} d\zeta \right] \\ &= \frac{1-2\nu}{2\sqrt{2\pi}} K_I^0 k\epsilon \text{Im} \left[ i e^{ikz} \int_0^{+\infty} \sin(k\zeta) \frac{\text{sgn}(\zeta)}{\zeta^{3/2}} d\zeta \right], \end{aligned}$$

where use has been made of the change of variable  $\zeta \equiv z' - z$  and parity properties. Calculation of the last integral using [Gradshteyn and Ryzhik 1980, formulae (3.7614) and (8.338.3)] then yields

$$\delta T_{11}(z) \simeq \left(\frac{1}{2} - \nu\right) K_I^0 k^{3/2} \epsilon \cos(kz). \quad (27)$$

This expression happens to exactly coincide with [Gao 1992, formula (44)]. This means that the terms disregarded by Gao without proper justification (see Section 4.3 above) are indeed negligible with the hypotheses introduced above.

Equation (27) confirms that  $\delta T_{11}$  is of order  $K_I^0 k^{3/2}\epsilon$ , as anticipated, whereas  $T_{11}^0$  is of order  $K_I^0 L^{-1/2}$ . We therefore introduce the following final hypothesis:

- The characteristic length  $L$  defined by the loading, and the fluctuations of toughness generating the in-plane undulations of the crack front, are sufficiently large for the dimensionless quantity  $k^{3/2}\epsilon L^{1/2} = k\epsilon\sqrt{kL}$  to be much larger than unity. (Note that this hypothesis does not contradict that of smallness of the perturbation: indeed, one may have  $|\epsilon\phi'| \sim k\epsilon \ll 1$  but  $k\epsilon\sqrt{kL} \gg 1$ , since  $kL$  is assumed to be much larger than unity.)

Then the unperturbed nonsingular stress  $T_{11}^0$  is negligible compared to its variation  $\delta T_{11}$ , so that

$$T_{11}(z) \simeq \delta T_{11}(z) \simeq \left(\frac{1}{2} - \nu\right) K_I^0 k^{3/2} \epsilon \cos(kz). \quad (28)$$

**6.4. Analysis of deviation from coplanarity and directional stability.** As remarked by Gao and Rice [1986], (26) implies that the mode II SIF  $K_{II}(z)$  takes nonzero and opposite values on the two sides of a local bump or hollow of the coplanarly perturbed crack front. It then follows from (21) (with  $K_I(z)$ ,  $K_{II}(z)$  instead of  $K_I(s)$ ,  $K_{II}(s)$ ) that the subsequent kink angle  $\theta(z)$  will also take nonzero and opposite values on these two sides, implying formation of an incipient noncoplanar facet gradually rotating about the direction of propagation of the crack.

To pursue the analysis, assume for instance  $K_{III}^0$  to be positive and consider a zone of the coplanarly perturbed crack front having  $\cos(kz) > 0$ , thus lying ahead of its mean position. Over such a zone, the function  $\sin(kz)$  increases so that, by (21) and (26), the kink angle  $\theta(z)$  of the future noncoplanar facet is a decreasing function of  $z$ . Looking at Figure 5 and imagining a facet with this property, one easily sees that it tends to rotate in time in the *positive* direction about the axis  $Ox$ , and that this rotation tends to gradually enhance the local value of the mode I SIF and lower that of the mode III SIF. Such evolutions of the SIF are, as explained in the introduction, typical of type A facets. This confirms the anticipated property that a facet formed from a locally more advanced zone of the crack front must be of this type.

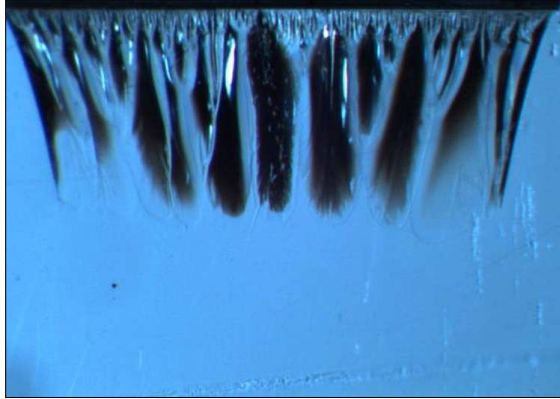
Conversely, over a zone having  $\cos(kz) < 0$ , thus lying behind the mean position of the front,  $\sin(kz)$  decreases,  $\theta(z)$  increases, the facet rotates in the negative direction about the axis  $Ox$ , so that the mode I SIF decreases in time, whereas that of mode III increases. Such evolutions are typical of type B facets. This again confirms the anticipated property that facets formed from less advanced zones of the crack front must be of that other type.

The preceding analysis, however, says nothing about the directional stability of the facets. To examine this question, consider the expression (28) for the nonsingular stress  $T_{11}(z)$  on the coplanarly perturbed crack front. On a zone having  $\cos(kz) > 0$ , about to generate a type A facet, this nonsingular stress is positive, so that Cotterell and Rice's directional stability criterion (23) is violated, implying directional instability; conversely, on a zone having  $\cos(kz) < 0$ , about to generate a type B facet, Cotterell and Rice's criterion is met, implying directional stability. This suggests that, in addition to the tendency of type A facets to propagate ahead of type B ones, *there is a tendency of the former facets to deviate more and more in time from the original crack plane, versus of the latter ones to come back to it*. These elements provide some theoretical ground for the intuitive idea that the crack would ideally like to develop exclusively along noncoplanar facets of type A, type B ones being present only because they are geometrically necessary to join them.

It is important to note that the tendencies just mentioned are completely independent of the value of the ratio  $K_{III}^0/K_I^0$  (as long as  $K_{III}^0$  is nonzero, which is a necessary condition for out-of-plane deviations of the crack to appear). Thus, increasing deviations from coplanarity of type A facets generated by in-plane fluctuations of the fracture toughness are probable because of a Cotterell–Rice-type instability, even for low values of this ratio. *An instability of this type is therefore a good candidate for the explanation of increasing deviations of mode I+III cracks from coplanarity observed experimentally for values of  $K_{III}^0/K_I^0$  smaller, or even much smaller than Leblond et al.'s theoretical threshold for occurrence of a bifurcation [2011].*<sup>5</sup>

One may analyze in more detail the importance of the Cotterell–Rice-type instability as a function of

<sup>5</sup>It cannot be the sole explanation, however, since such deviations *could* be observed in Pons and Karma's numerical simulations [2010] of crack propagation in mode I+III based on Karma et al.'s phase field model [2001], though they did *not* include fluctuations of the fracture toughness.



**Figure 6.** Fracture facets in mode I+III. Experiment by Buchholz, photograph by Lazarus.

the wavelength  $\lambda = 2\pi/k$  of the coplanar crack front perturbation. This requires comparing the values of the curvature parameter  $a(z)$  of the incipient facets for various initial in-plane sinusoidal perturbations of the crack front, having different wavelengths. Combination of equations (21) and (22) (with  $K_I(z)$ ,  $K_{II}(z)$ ,  $T_{11}(z)$  instead of  $K_I(s)$ ,  $K_{II}(s)$ ,  $T_{11}(s)$ ), (26) and (28) yields

$$a(z) = -\frac{16}{3} \sqrt{\frac{2}{\pi}} \frac{1-2\nu}{2-\nu} \frac{K_{III}^0}{K_I^0} k^{5/2} \epsilon^2 \sin(kz) \cos(kz). \tag{29}$$

This expression makes it clear that, when comparing the curvature parameters  $a(z)$  of various perturbations, one should fix their amplitude  $\epsilon$  in some way, otherwise the obvious effect of this amplitude will mask that of the wavenumber  $k$ . A logical way of doing so is to consider “homothetic” perturbations identical in shape but not in size, that is, sinusoidal fronts having the same maximal “slope”  $k\epsilon$  in the crack plane but different wavenumbers  $k$ . Equation (29) shows that  $a(z)$  is proportional to  $(k\epsilon)^2 \sqrt{k}$ , that is, to  $\sqrt{k}$  or  $1/\sqrt{\lambda}$  for a given value of  $k\epsilon$ . Therefore, the smaller the value of  $\lambda$ , the larger that of  $a(z)$  in absolute value; in other words, *the smaller the wavelength of the initial in-plane perturbation, the more directionally unstable the incipient facets it generates, if of type A, and the more directionally stable these facets, if of type B*. This theoretical conclusion finds some experimental support in the fact that incipient facets actually observed are generally of tiny initial wavelength, apparently limited in smallness only by the microstructure of the material. This is illustrated in Figure 6, which shows a photograph taken by Lazarus of a mode I+III fracture surface generated in a glass specimen by Buchholz, where the initial crack is located at the very top and propagates toward the bottom. (The photograph also shows that the wavelength of the facets does *not* remain small when their length increases, due to the gradual “coarsening” resulting from their progressive coalescence; such a phenomenon of course completely eludes the present analysis limited to *incipient* facets.)

### 7. Conclusion

This paper was devoted to the investigation of the idea that quick deviations of cracks loaded in mode I+III from their original plane might be made much easier by a strong influence of imperfections. Such an influence could stand as a plausible explanation for the fact that, as reported notably by Sommer [1969]

and Pham and Ravi-Chandar [2014], such deviations are frequently observed experimentally for small values of the ratio of the mode III to mode I unperturbed SIFs, lying below or even much below the theoretical threshold for occurrence of a bifurcation calculated by Leblond et al. [2011].

A typical example of inevitable imperfections consists of small fluctuations of the fracture toughness within the initial crack plane, which generate small in-plane undulations of the crack front. Rice [1985] and Gao and Rice [1986] calculated the distributions of the SIFs of the three modes resulting from a slight but otherwise arbitrary in-plane perturbation of the front of a semi-infinite crack loaded arbitrarily; in particular, Gao and Rice showed that the local mode II SIF takes nonzero and opposite values on the two sides of a local protrusion of this front, implying future local deviations of the propagating crack from coplanarity of opposite signs on these two sides, giving birth to an incipient “fracture facet” gradually rotating about the direction of propagation.

Gao and Rice, however, left open the question of the “directional stability” of these facets. It was precisely the main purpose of the present paper to complement their work by analyzing this question, using Cotterell and Rice’s well-known “directional stability criterion” [1980] (duly extended to the 3D case by Leblond [1999]).

Since Cotterell and Rice’s stability condition is on the sign of the nonsingular stress parallel to the direction of propagation, its application to the analysis of directional stability of the facets requires knowledge of the distributions of the nonsingular stresses for a crack with a slightly, coplanarly perturbed front. The necessary calculations were performed by Gao [1992], but with some restrictive hypotheses and unjustifiably omitting some terms, which made it necessary to revisit the problem. This has been done here by using the theory of 3D weight functions [Rice 1985; Bueckner 1987]. Fully general formulae have been obtained for the variations of the nonsingular stresses resulting from some slight but otherwise arbitrary in-plane perturbation of a semi-infinite crack, confirming and completing the partial results of [Gao 1992].

The formula obtained for the variation of the nonsingular stress parallel to the direction of crack propagation was then applied to a typically sinusoidal coplanar perturbation of the front. A distinction was made between the more advanced zones of the front, about to generate an incipient facet of “type A” rotating about the direction of propagation, so as to raise the local proportion of mode I versus mode III, and the less advanced ones, about to generate a facet of “type B”, rotating oppositely so as to lower this proportion.

It has been found that, provided that the length scale defined by the loading and the fluctuations of the fracture toughness are large enough, the nonsingular stress parallel to the direction of propagation is positive on the former zones, implying directional instability, and negative on the latter ones, implying directional stability. This shows that even for low values of the ratio of the mode III to mode I unperturbed SIFs, crack propagation in mode I+III may occur through preferential formation of noncoplanar facets of type A, because of a local Cotterell–Rice-type instability — which confirms the idea investigated.

It has also been found that the smaller the wavelength of the initial in-plane perturbation, the stronger Cotterell and Rice’s instability on the resulting incipient facets of type A. This implies preferential development of type A facets of *small* initial wavelength, in agreement with experimental observations.

## References

- [Bueckner 1987] H. F. Bueckner, “Weight functions and fundamental fields for the penny-shaped and the half-plane crack in three-space”, *Int. J. Solids Struct.* **23**:1 (1987), 57–93.
- [Cooke and Pollard 1996] M. L. Cooke and D. D. Pollard, “Fracture propagation paths under mixed mode loading within rectangular blocks of polymethyl methacrylate”, *J. Geophys. Res.* **101**:B2 (1996), 3387–3400.
- [Cotterell and Rice 1980] B. Cotterell and J. R. Rice, “Slightly curved or kinked cracks”, *Int. J. Fract.* **16**:2 (1980), 155–169.
- [Gao 1992] H. Gao, “Variation of elastic  $T$ -stresses along slightly wavy 3D crack fronts”, *Int. J. Fract.* **58**:3 (1992), 241–257.
- [Gao and Rice 1986] H. Gao and J. R. Rice, “Shear stress intensity factors for a planar crack with slightly curved front”, *J. Appl. Mech. (ASME)* **53**:4 (1986), 774–778.
- [Goldstein and Osipenko 2012] R. V. Goldstein and N. M. Osipenko, “Successive development of the structure of a fracture near the front of a longitudinal shear crack”, *Dokl. Phys.* **57**:7 (2012), 281–284.
- [Goldstein and Salganik 1974] R. V. Goldstein and R. L. Salganik, “Brittle fracture of solids with arbitrary cracks”, *Int. J. Fract.* **10**:4 (1974), 507–523.
- [Gradshteyn and Ryzhik 1980] I. S. Gradshteyn and I. M. Ryzhik, *Table of integrals, series, and products*, Academic Press, New York, 1980.
- [Griffith 1921] A. A. Griffith, “The phenomena of rupture and flow in solids”, *Phil. Trans. R. Soc. A* **221**:587 (1921), 163–198.
- [Hakim and Karma 2009] V. Hakim and A. Karma, “Laws of crack motion and phase-field models of fracture”, *J. Mech. Phys. Solids* **57**:2 (2009), 342–368.
- [Hourlier and Pineau 1979] F. Hourlier and A. Pineau, “Fissuration par fatigue sous sollicitations polymodales (mode I ondulé + mode III permanent) d’un acier pour rotors 26NCDV14”, *Mém. Sci. Rev. Métall.* **76** (1979), 175–185.
- [Hull 1995] D. Hull, “The effect of mixed mode I/III on crack evolution in brittle solids”, *Int. J. Fract.* **70**:1 (1995), 59–79.
- [Karma et al. 2001] A. Karma, D. A. Kessler, and H. Levine, “Phase-field model of mode III dynamic fracture”, *Phys. Rev. Lett.* **87** (2001), Article ID #045501.
- [Knauss 1970] W. G. Knauss, “An observation of crack propagation in anti-plane shear”, *Int. J. Fract.* **6**:2 (1970), 183–187.
- [Kuo 1993] M. K. Kuo, “Stress intensity factors for a semi-infinite plane crack under a pair of point forces on the faces”, *J. Elasticity* **30**:3 (1993), 197–209.
- [Lazarus 1997] V. Lazarus, *Quelques problèmes tridimensionnels de mécanique de la rupture fragile*, thesis, Université Pierre et Marie Curie, Paris, 1997, Available at <https://tel.archives-ouvertes.fr/tel-00273453>.
- [Lazarus et al. 2001a] V. Lazarus, J.-B. Leblond, and S.-E. Mouchrif, “Crack front rotation and segmentation in mixed mode I + III or I + II + III. Part I: Calculation of stress intensity factors”, *J. Mech. Phys. Solids* **49**:7 (2001), 1399–1420.
- [Lazarus et al. 2001b] V. Lazarus, J.-B. Leblond, and S.-E. Mouchrif, “Crack front rotation and segmentation in mixed mode I + III or I + II + III. Part II: Comparison with experiments”, *J. Mech. Phys. Solids* **49**:7 (2001), 1421–1443.
- [Lazarus et al. 2008] V. Lazarus, F.-G. Buchholz, M. Fulland, and J. Wiebesiek, “Comparison of predictions by mode II or mode III criteria on crack front twisting in three or four point bending experiments”, *Int. J. Fract.* **153**:2 (2008), 141–151.
- [Leblond 1999] J.-B. Leblond, “Crack paths in three-dimensional elastic solids, I: Two-term expansion of the stress intensity factors—application to crack path stability in hydraulic fracturing”, *Int. J. Solids Struct.* **36**:1 (1999), 79–103.
- [Leblond et al. 1999] J.-B. Leblond, V. Lazarus, and S.-E. Mouchrif, “Crack paths in three-dimensional elastic solids, II: Three-term expansion of the stress intensity factors—applications and perspectives”, *Int. J. Solids Struct.* **36**:1 (1999), 105–142.
- [Leblond et al. 2011] J.-B. Leblond, A. Karma, and V. Lazarus, “Theoretical analysis of crack front instability in mode I + III”, *J. Mech. Phys. Solids* **59**:9 (2011), 1872–1887.
- [Lin et al. 2010] B. Lin, M. E. Mear, and K. Ravi-Chandar, “Criterion for initiation of cracks under mixed-mode I + III loading”, *Int. J. Fract.* **165**:2 (2010), 175–188.
- [Movchan et al. 1998] A. B. Movchan, H. Gao, and J. R. Willis, “On perturbations of plane cracks”, *Int. J. Solids Struct.* **35**:26-27 (1998), 3419–3453.
- [Pham and Ravi-Chandar 2014] K. Pham and K. Ravi-Chandar, “Further examination of the criterion for crack initiation under mixed-mode I+III loading”, *Int. J. Fract.* **189**:2 (2014), 121–138.



- [Pollard and Aydin 1988] D. D. Pollard and A. Aydin, “Progress in understanding jointing over the past century”, *Geol. Soc. Am. Bull.* **100**:8 (1988), 1181–1204.
- [Pollard et al. 1982] D. D. Pollard, P. Segall, and P. T. Delaney, “Formation and interpretation of dilatant echelon cracks”, *Geol. Soc. Am. Bull.* **93**:12 (1982), 1291–1303.
- [Pons and Karma 2010] A. J. Pons and A. Karma, “Helical crack-front instability in mixed-mode fracture”, *Nature* **464** (2010), 85–89.
- [Rice 1985] J. R. Rice, “First-order variation in elastic fields due to variation in location of a planar crack front”, *J. Appl. Mech. (ASME)* **52**:3 (1985), 571–579.
- [Sommer 1969] E. Sommer, “Formation of fracture ‘lances’ in glass”, *Eng. Fract. Mech.* **1**:3 (1969), 539–546.
- [Suresh and Tscheegg 1987] S. Suresh and E. K. Tscheegg, “Combined mode I–mode III fracture of fatigue-precracked alumina”, *J. Am. Ceram. Soc.* **70**:10 (1987), 726–733.
- [Yates and Miller 1989] J. R. Yates and K. J. Miller, “Mixed mode (I+III) fatigue thresholds in a forging steel”, *Fatigue Fract. Eng. Mater. Struct.* **12**:3 (1989), 259–270.

Received 13 Jan 2014. Accepted 12 Oct 2014.

JEAN-BAPTISTE LEBLOND: [jbl@lmm.jussieu.fr](mailto:jbl@lmm.jussieu.fr)

*Institut Jean Le Rond d’Alembert, Sorbonne Universités UPMC Université Paris 06, CNRS, UMR 7190, 75005 Paris 06, France*

VÉRONIQUE LAZARUS: [veronique.lazarus@u-psud.fr](mailto:veronique.lazarus@u-psud.fr)

*CNRS, Université Paris-Sud 11, Lab FAST, UMR 7608, 91405 Orsay, France*

# JOURNAL OF MECHANICS OF MATERIALS AND STRUCTURES

[msp.org/jomms](http://msp.org/jomms)

Founded by Charles R. Steele and Marie-Louise Steele

## EDITORIAL BOARD

ADAIR R. AGUIAR	University of São Paulo at São Carlos, Brazil
KATIA BERTOLDI	Harvard University, USA
DAVIDE BIGONI	University of Trento, Italy
YIBIN FU	Keele University, UK
IWONA JASIUK	University of Illinois at Urbana-Champaign, USA
C. W. LIM	City University of Hong Kong
THOMAS J. PENCE	Michigan State University, USA
DAVID STEIGMANN	University of California at Berkeley, USA

## ADVISORY BOARD

J. P. CARTER	University of Sydney, Australia
D. H. HODGES	Georgia Institute of Technology, USA
J. HUTCHINSON	Harvard University, USA
D. PAMPLONA	Universidade Católica do Rio de Janeiro, Brazil
M. B. RUBIN	Technion, Haifa, Israel

**PRODUCTION** [production@msp.org](mailto:production@msp.org)

SILVIO LEVY Scientific Editor

---

See [msp.org/jomms](http://msp.org/jomms) for submission guidelines.


---

JoMMS (ISSN 1559-3959) at Mathematical Sciences Publishers, 798 Evans Hall #6840, c/o University of California, Berkeley, CA 94720-3840, is published in 10 issues a year. The subscription price for 2015 is US\$565/year for the electronic version, and \$725/year (+\$60, if shipping outside the US) for print and electronic. Subscriptions, requests for back issues, and changes of address should be sent to MSP.

---

JoMMS peer-review and production is managed by EditFLOW® from Mathematical Sciences Publishers.

PUBLISHED BY

 **mathematical sciences publishers**  
nonprofit scientific publishing

<http://msp.org/>

© 2015 Mathematical Sciences Publishers

**Special issue**  
**In Memoriam: Huy Duong Bui**

<b>Huy Duong Bui</b>	<b>JEAN SALENÇON and ANDRÉ ZAOUÏ</b>	<b>207</b>
<b>The reciprocity likelihood maximization: a variational approach of the reciprocity gap method</b>	<b>STÉPHANE ANDRIEUX</b>	<b>219</b>
<b>Stability of discrete topological defects in graphene</b>	<b>MARIA PILAR ARIZA and JUAN PEDRO MENDEZ</b>	<b>239</b>
<b>A note on wear of elastic sliding parts with varying contact area</b>	<b>MICHELE CIAVARELLA and NICOLA MENGÀ</b>	<b>255</b>
<b>Fracture development on a weak interface near a wedge</b>	<b>ALEXANDER N. GALYBIN, ROBERT V. GOLDSTEIN and KONSTANTIN B. USTINOV</b>	<b>265</b>
<b>Edge flutter of long beams under follower loads</b>	<b>EMMANUEL DE LANGRE and OLIVIER DOARÉ</b>	<b>283</b>
<b>On the strong influence of imperfections upon the quick deviation of a mode I+III crack from coplanarity</b>	<b>JEAN-BAPTISTE LEBLOND and VÉRONIQUE LAZARUS</b>	<b>299</b>
<b>Interaction between a circular inclusion and a circular void under plane strain conditions</b>	<b>VLADO A. LUBARDA</b>	<b>317</b>
<b>Dynamic conservation integrals as dissipative mechanisms in the evolution of inhomogeneities</b>	<b>XANTHIPPI MARKENSCOFF and SHAIENDRA PAL VEER SINGH</b>	<b>331</b>
<b>Integral equations for 2D and 3D problems of the sliding interface crack between elastic and rigid bodies</b>	<b>ABDELBACET OUESLATI</b>	<b>355</b>
<b>Asymptotic stress field in the vicinity of a mixed-mode crack under plane stress conditions for a power-law hardening material</b>	<b>LARISA V. STEPANOVA and EKATERINA M. YAKOVLEVA</b>	<b>367</b>
<b>Antiplane shear field for a class of hyperelastic incompressible brittle material: Analytical and numerical approaches</b>	<b>CLAUDE STOLZ and ANDRES PARRILLA GOMEZ</b>	<b>395</b>
<b>Some applications of optimal control to inverse problems in elastoplasticity</b>	<b>CLAUDE STOLZ</b>	<b>411</b>
<b>Harmonic shapes in isotropic laminated plates</b>	<b>XU WANG and PETER SCHIAVONE</b>	<b>433</b>